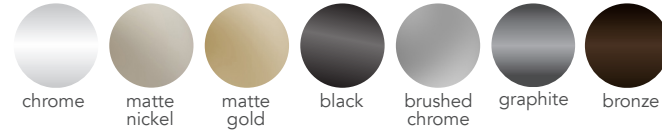


COMPLETE YOUR DESIGN

Handles & Knobs

AVAILABLE FINISHES I



KNOBES

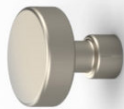
Unless otherwise noted knobs are available in all finishes except Bronze.



BUTTON knob



MOD knob



NORDIC knob



SOFT SQUARE knob



WATERFALL knob



PETITE knob



ROUND knob*

HANDLES

Unless otherwise noted handles are available in all finishes except Bronze.



ELEGANT handle
sizes: 160mm



SWOOP handle
sizes: 128mm



MOD handle
sizes: 128mm, 256mm



MOD DROPPED handle
sizes: 128mm



STAPLE handle
sizes: 96mm, 128mm, 192mm



WATERFALL handle
sizes: 160mm



BOW handle*
sizes: 96mm



NORDIC handle
sizes: 128mm, 256mm, 352mm



BAR handle†



ARCH handle‡

LEATHER WRAPPED

Our new leather wrapped handle collection gives the best of both worlds by combining two contemporary looks into one; faux leather and classic metal. Coordinate with our leather wrapped poles for the full luxury look.

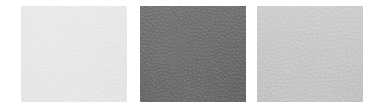


NORDIC LEATHER handle
sizes: 128mm, 256mm



LUXE LEATHER handle
sizes: 128mm, 256mm

LEATHER OPTIONS –



Winter

Pewter

Oyster

* Available in Chrome, Brushed Chrome, Matte Nickel, Bronze

† Available in Brushed Chrome, Matte Nickel

‡ Available in all colors except Graphite

SHOWN IN MATTE NICKEL